

1. You should check Items with wrong balance, if they are used with serial number tracking or none, for that use Item History report and see the documents in which they are, then look at Serial number column

Item card

The screenshot shows a software window titled "UKSample: Item: Inspect". At the top, there are navigation buttons (back, forward, settings, undo, redo) and action buttons (New, Duplicate, Cancel, Save, and a trash icon). The main form contains the following fields and options:

- Item Identification:** No. 10101, Group AUDIO, Description Transistor radio.
- Status:** Closed, Not For Sales.
- Navigation Tabs:** Pricing (selected), Stock, Warehouse, Costs, Recipe, A/C, Varieties, Texts, Cost Model, User Values, Notes, BI.
- Pricing Section:**
 - Unit: PCS
 - Base Price: 25.00
 - Base Price Change: 21/04/2001
 - Price Factor: (empty)
 - Item Formula: (empty)
 - Markup %: 0
 - Bonus %: 2
 - Objects: AUDIO
 - Classification: SMAIN,AUDIO
- Item Type Section:**
 - Plain
 - Stocked Item
 - Structured Item
 - Service
 - Treat Item as Material on Project
- Serial Number Tracking Section:**
 - None
 - Unit Number
 - Batch Number
 - Do not Require Batch No. on POS Invoice
- Other Fields:**
 - Minimum Level: 2
 - Maximum Level: 1
 - Department: (empty)
 - Shelf Code: (empty)
 - Default Source: (empty)
 - Hazard Level: (empty)
 - Unit 2: (empty)
 - Unit Coefficient: (empty)
 - Environment Tax per Kilo: (empty)
 - Alcohol %: (empty)
 - Conversion 1: 0.00
 - Conversion 2: 0.00
 - Default Order Type: Normal

There is also an "Add picture" button next to a large empty image placeholder.

Item History

RESTRICTED Item HistoryHansaWorld Enterprise Sample Company
Only Stocked Items

Enterprise by HansaWorld, Print date: 04/12/2015 10:42

Period 01/01/2013 : 31/12/2014

Items 10101

Deliveries, Goods Receipts, Invoices, Production Orders, Productions, Return Goods
Ret. Goods To Supplier, Stock Depreciations, Stock Movements, Stock Transfers, Work Sheet

With Values

Trans Date

Don't show Quantity 2

Date	Type	Reference	Dsp. No.	Cust/Supp.	Location	Qty	P-Price	Sum
10101	Transistor radio				PCS			
	Fwd Balance					223.00	9.99956	2,229.90188
17/04/2013	G.Rec.	15		Against All	WHS	30.00	9.99967	299.99
17/04/2013	Deld	7		Against All	WHS	-2.00	9.94188	-19.8838
06/12/2013	Invd	2013003		Against All	WHS	-2.00	9.92482	-19.8496
10/01/2014	Deld	8		Against All	WHS	-5.00	9.92482	-49.6241
12/02/2014	G.Rec.	17		UK Trading	WHS	10.00	9.50	95.00
						254.00		2,535.53
						254		2,535.53

Goods receipt

UKSample: Goods Receipt: Inspect

No. 15 Name Against All Odds Trading Co

Supplier 001 OK Price Incl. VAT

Terms Items Currency Extra Costs Freight Comment

Trans. Date 17/04/2013 Objects Purch. Order Class LOCAL

Location WHS Purch. Order No. 16 Language

Route Purch. Contract Customs Number

Scan Barcode

Item	Qty	Description	Location	Serial No.	Best Before	Batch St...	A
1	10101	30 Transistor radio					B
2	10102	31 Surround Sound Radio an...					C
3	10103	32 Receiver					D
4	10104	33 Loudspeakers					E
5	10105	34 Cassette deck					F
6	10106	40 CD player					G
7	10107	41 CD's - High density					H
8	10108	42 Microphone					I
9	10109	43 CD rack					
10							
11							
12							
13							
14							
15							
16							

Total Qty 326 Freight 0 VAT 419.49 Subtotal 2,397.09

Customs 0 Ext. Tax 0.00 TOTAL 2,816.58

- If the Item is used without Serial Number then in Item card should be None. If it is used with serial number then in Item card should be Unit number or Batch number.

2. When the Item card is checked then you should depreciate all the balance of that Item.

To see what quantities you have and in which stock use Stock list report with Radio button 'Per location'

UKSample: Specify Stock List

Run



Item No.

Item Group

Item Classification

Classification Type

Location

Position

Department

Supplier

Date

- Only with Balance
- Negative Qtys only
- Show Serial No.
- Show Quantity 2
- Value - Two Decimals
- Include Closed Items
- Report Calculates Back Dated WA
- Show with Supersessions
- Show Varieties

Function

- Overview
- Detailed
- Per Location
 - Inc Values
- Location Totals

Valuation Method

- Default
- Cost Price
- % of Base Price
- Weighted Average
- Queued

Sorting

- No.
- Group
- Name
- Barcode
- Classification

Display

- Normal
- Summarised
- De-Summarised

Function

- Include Consignment Stock
- Exclude Consignment Stock
- Consignment Stock Only

Media

- Screen
- Printer
- File
- Clipboard
- Fax
- Pdf
- Pdf and E-mail
- Html as Attachment
- Excel
- Print Dialog
- Ignore Timeout Limit

Pdf Orientation

- Portrait
- Landscape

Item No	Name	Balance	Cost Price	Value
10101	Transistor radio		PCS	
	IRELAND	2		
	WHS	252		
		254	0.00	
		254		

For depreciaton use Depreciation. Better use one depreciation for one stock so if you have item in two stock then two depreciations.

UKSample: Stock Depreciation: Inspect

No.
 Trans. Date
 Reason
 OK

Cost A/C
 Order Class
 Reference

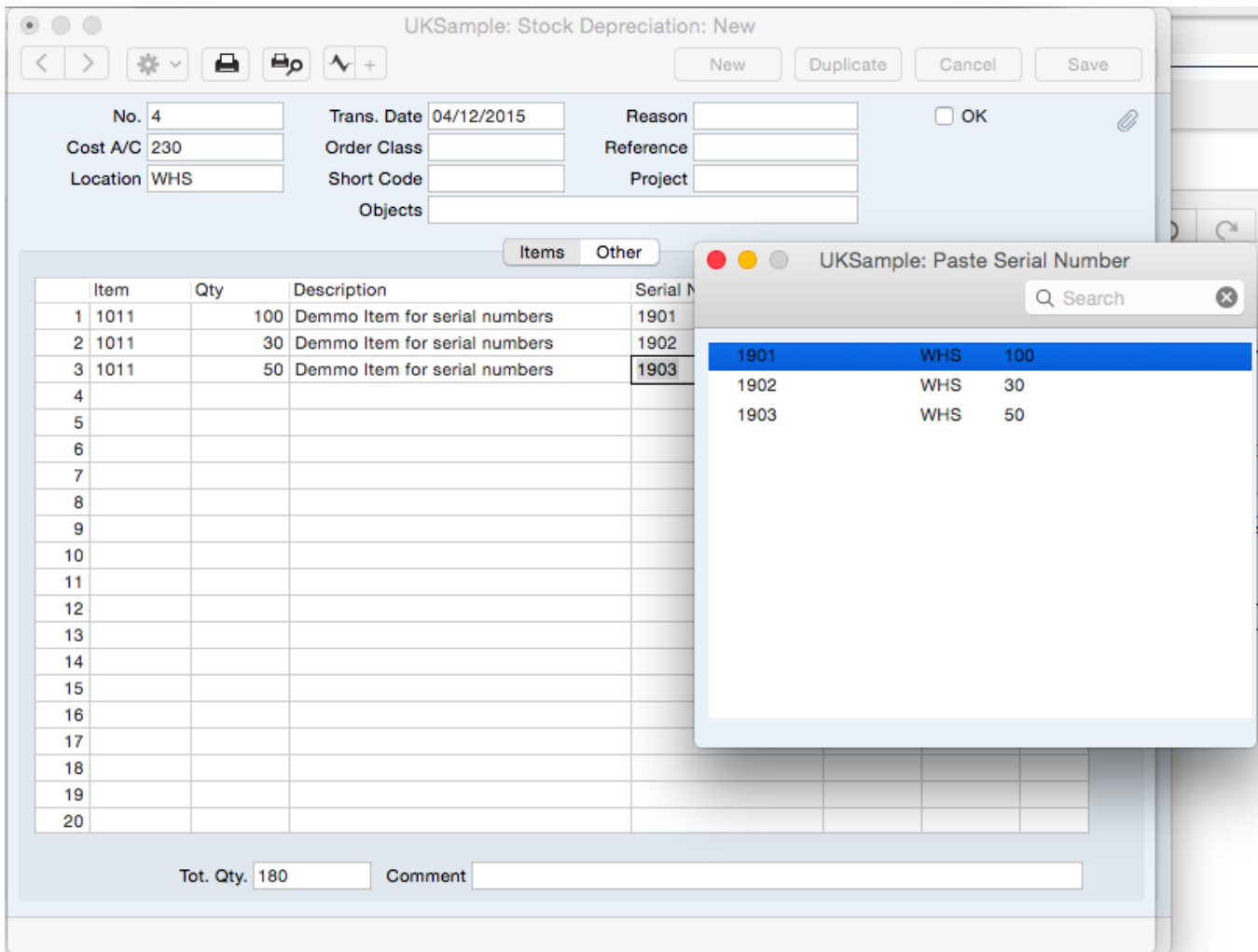
Location
 Short Code
 Project

Objects

	Item	Qty	Description	Serial No.	Location	Position	Coeff.	
1	10101	252	Transistor radio					A
2								B
3								C
4								D
5								E
6								
7								
8								
9								
10								
11								
12								
13								
14								
15								
16								
17								
18								
19								
20								

Tot. Qty.
 Comment

Also if Item is with Serial number, then you should Depreciate all balances for Serial numbers



3. When the Item is depreciated then check reports Stock list and Item history for that item

4. If everything is ok make Goods receipt , with right quantities and cost price. Also if you should receive in two stocks then make two Goods receipt documents.

- if Item is used with serial number you should put it in Goods receipt FlipB
- if Item is used without serial number tracking then you should not put any serial number in FlipB