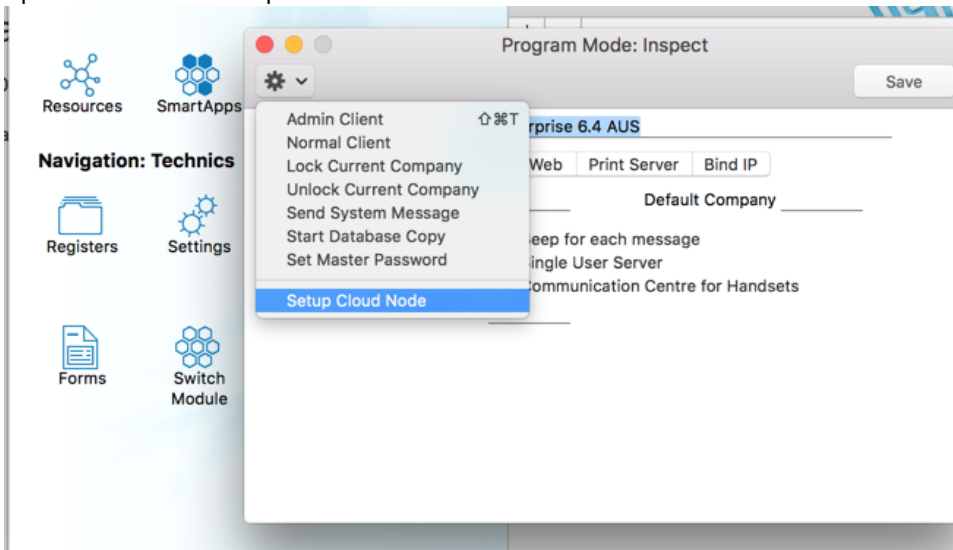
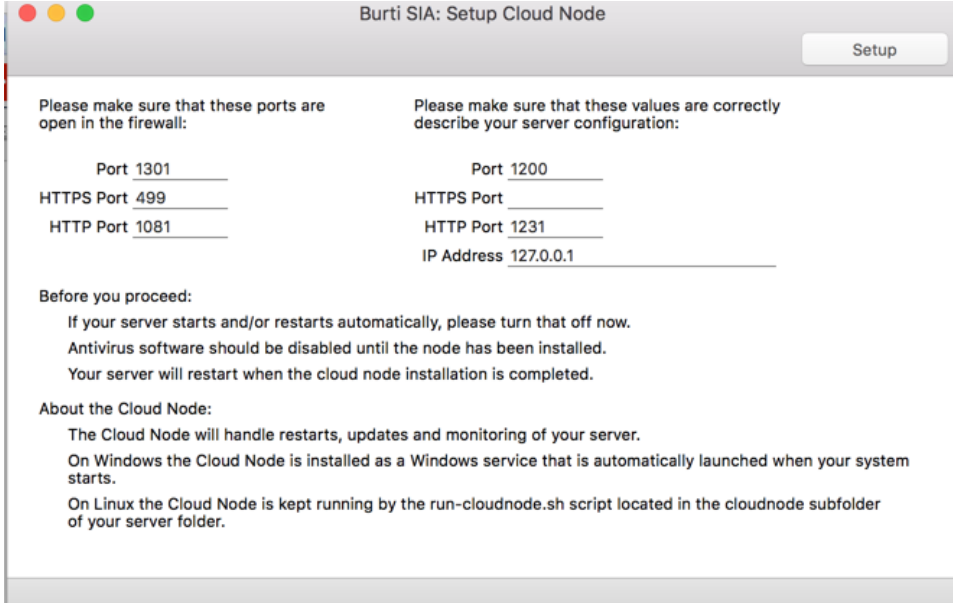


1. Make sure outgoing connections to these servers and ports are allowed:
 1. hansaworld.com:80
 2. lookup.hansaworld.com:443
 3. validate.hansaworld.com:443
 4. validate.hansaworld.com:1401
 - e. downloads.hansaworld.com:80
 6. cloudcontroller.burti.lv:499
 7. cloudcontroller.burti.lv:2001
2. Setup a StandardERP server if you don't have one already
3. **After setting up the database - import this additional file** (to add the cloud node to Burti) [burti_hosting_partner_block.txt](#)
4. Open Technics module
5. Registers
6. Programm status
7. Special Menu -> Setup Cloud Node



8. A window will open where you can make alterations (only if needed and approved beforehand)



- 9.

